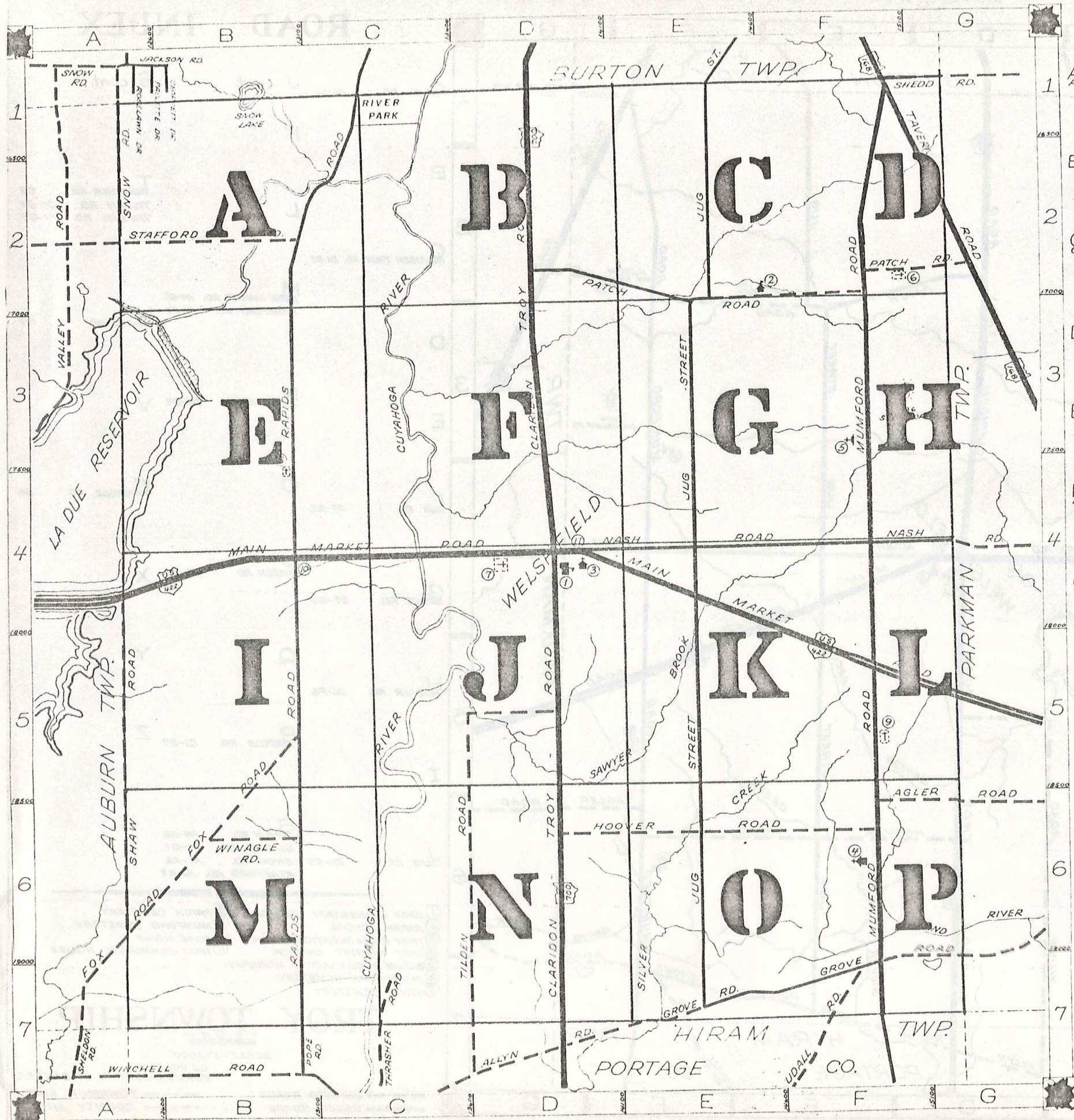


# ROAD INDEX



1	A	AGLER RD. F6-G6	J cont.	S cont.
	B		K	
2	C	CLARIDON TROY RD. DI-D7	L	T THRASHER RD. C7 TILDEN RD. D5-D7 TAVERN RD. F1-G3
	D		M	MAIN MARKET RD. A4-G5 MUMFORD RD. F1-F7
3	E		N	NASH RD. D4-G4
	F	FOX RD. A7-B5	O	W WINAGLE RD. B6
4	G	GROVE RD. E7-G6	P	PATCH RD. D2-G2
	H	HOOVER RD. D6-F6	Q	Y
5	I		R	RAPIDS RD. CI-B7
	J	JUG ST. EI-E7	S	SHAW RD. A4-A6 SHEDD RD. F1-G1 SNOW RD. A1-A2 STAFFORD RD. A2-B2

- ① TROY ELEMENTARY SCHOOL
- ⑧ PATCH CEMETERY
- ② AMISH SCHOOL
- ⑨ MUMFORD CEMETERY
- ③ TROY CONGREGATIONAL CH.
- ⑩ POPE HOME
- ④ TROY BAPTIST CHURCH
- ⑪ TROY COMMUNITY HOUSE
- ⑤ SHRINE OF OUR LADY OF MARIAPOCH
- ⑥ BURROUGHS CEMETERY
- ⑦ TROY CEMETERY

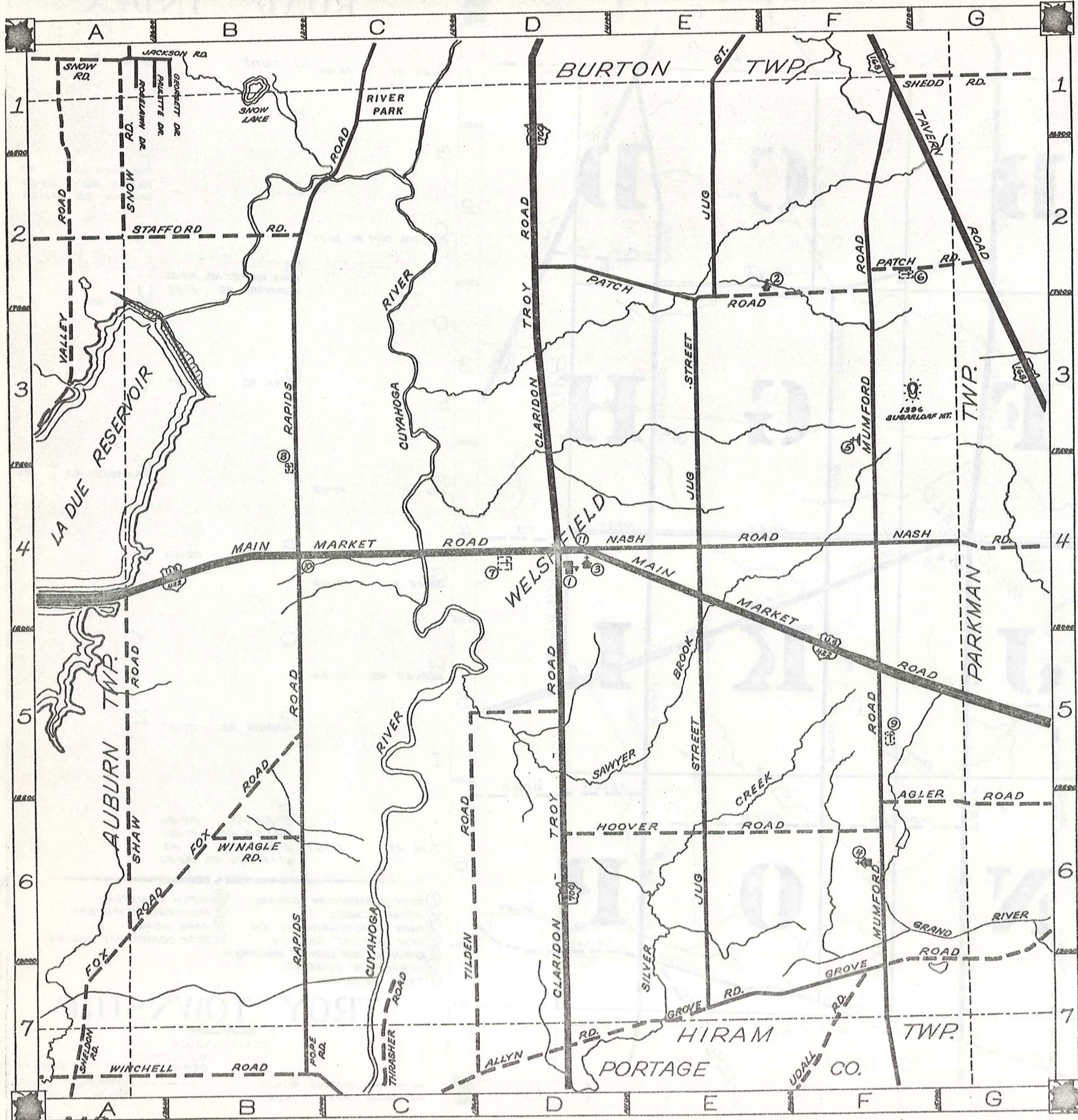
## TROY TOWNSHIP

SCALE: 1"=2000'

O.J. ROBINSON  
GEAUGA COUNTY ENGINEER

- UNPAVED ROADS
- TOWNSHIP LINE
- PAVED ROADS
- COUNTY LINE

# ROAD INDEX



1	A	AGLER RD. F6-G6	J cont.	S cont.
			K	
2	B		L	T THRASHER RD. C7 TILDEN RD. D5-D7 TAVERN RD. F1-G3
	C	CLARIDON TROY RD. DI-D7		
			M	MAIN MARKET RD. A4-G5 MUMFORD RD. F1-F7
3	D		U	UDALL RD. F7
	E		N	NASH RD. D4-G4
4	F	FOX RD. A7-B5	O	W WINABLE RD. B6
	G		P	PATCH RD. D2-G2
5			Q	
	H	HOOVER RD. D6-F6	R	RAPIDS RD. C1-B7
6	I		S	SHAW RD. A4-A6 SHEDD RD. F1-G1 SNOW RD. A1-A2 STAFFORD RD. A2-B2
7	J	JUG ST. E1-E7		

- ① TROY ELEMENTARY SCHOOL
- ② AMISH SCHOOL
- ③ TROY CONGREGATIONAL CH.
- ④ TROY BAPTIST CHURCH
- ⑤ SHRINE OF OUR LADY OF MARIAPOCH
- ⑥ BURROUGHS CEMETERY
- ⑦ TROY CEMETERY
- ⑧ PATCH CEMETERY
- ⑨ MUMFORD CEMETERY
- ⑩ POPE HOME
- ⑪ TROY COMMUNITY HOUSE

## TROY TOWNSHIP

SCALE: 1"=2000'

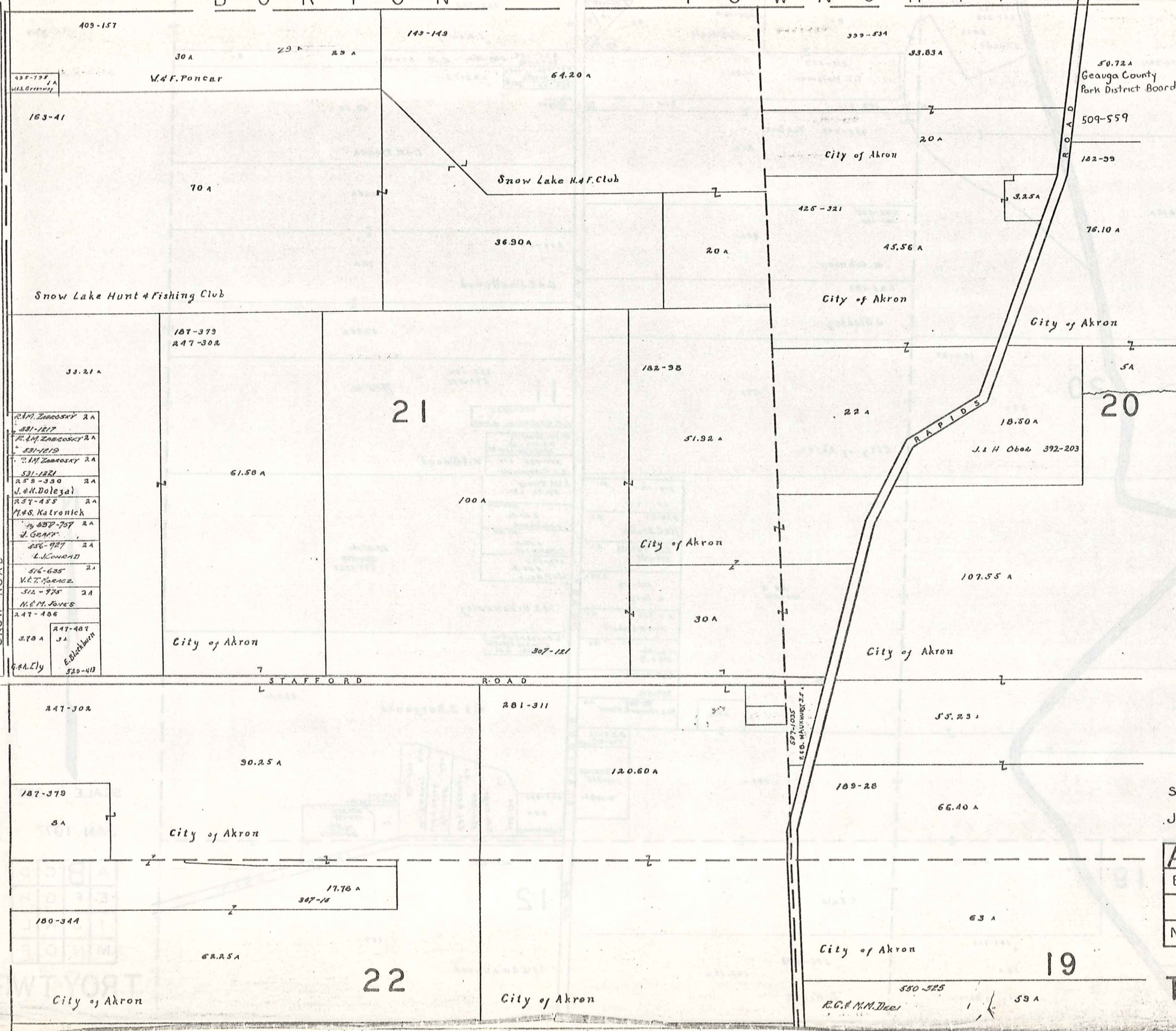
O.J. ROBINSON  
BEAUGA COUNTY ENGINEER

- UNPAVED ROADS
- PAVED ROADS
- TOWNSHIP LINE
- COUNTY LINE



BURTON TOWNSHIP

TOWNSHIP



- 247-157
- 163-41
- 70 A
- 33.21 A
- R.M. Zimosky 2A
- 531-1217
- R.M. Zimosky 2A
- 531-1219
- R.M. Zimosky 2A
- 531-1221
- 253-330 2A
- J. & H. Dolezal
- 257-455 2A
- M.S. Kalronick
- 657-757 2A
- J. GERR
- 556-927 2A
- L. CONRAD
- 516-635 2A
- V.C.T. KOENIG
- 512-975 2A
- M.E.M. JAMES
- 247-486
- 378 A
- 247-487 3A
- E. Blackburn
- 520-413



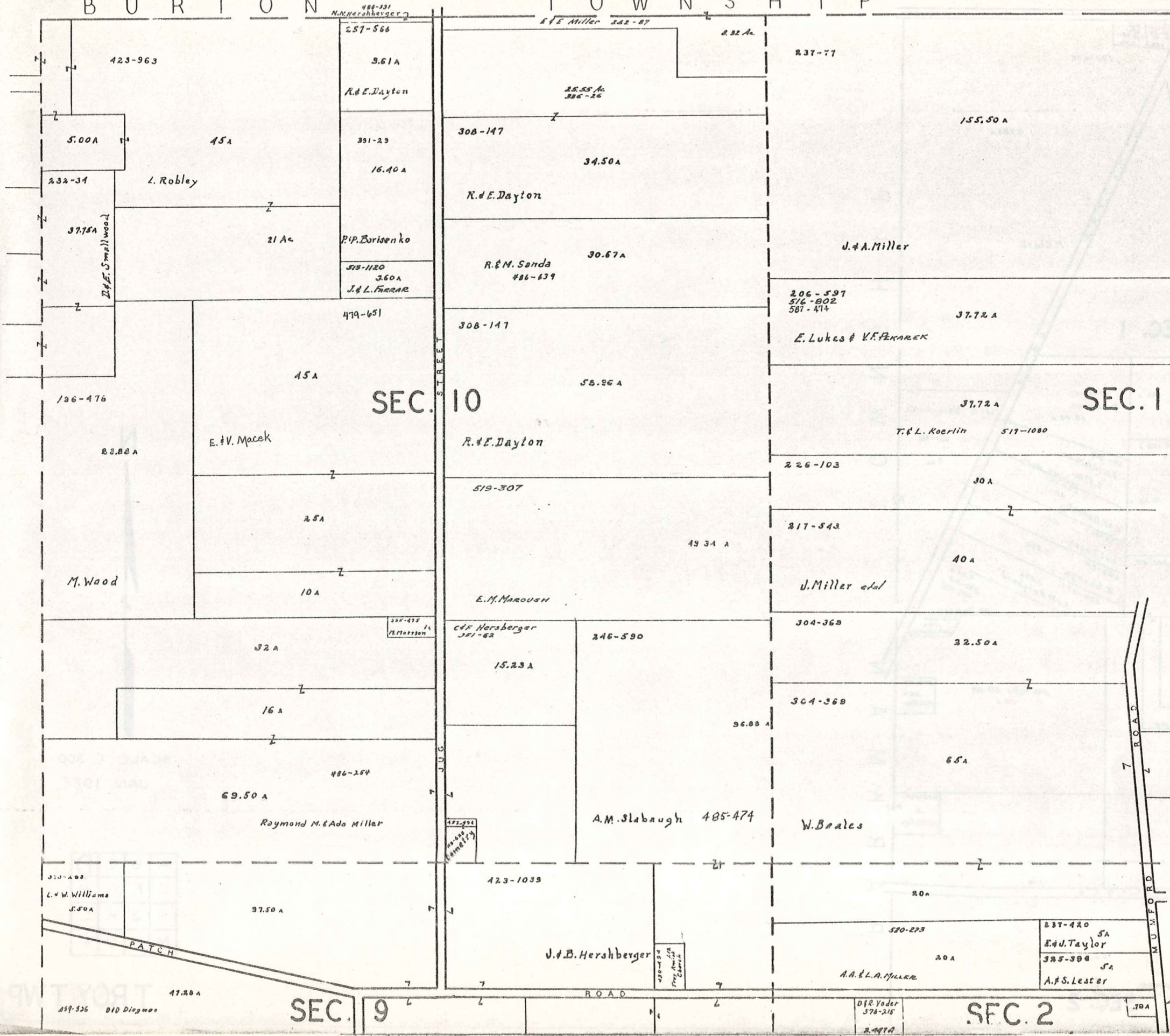
SCALE 1" = 300'  
JAN. 1972

A	B	C	D
E	F	G	H
I	J	K	L
M	N	O	P



BURTON

TOWNSHIP



SEC. 10

SEC. 1

SEC. 9

SEC. 2

TROY TWP

415

SCALE 1" = 300'  
JAN. 1977

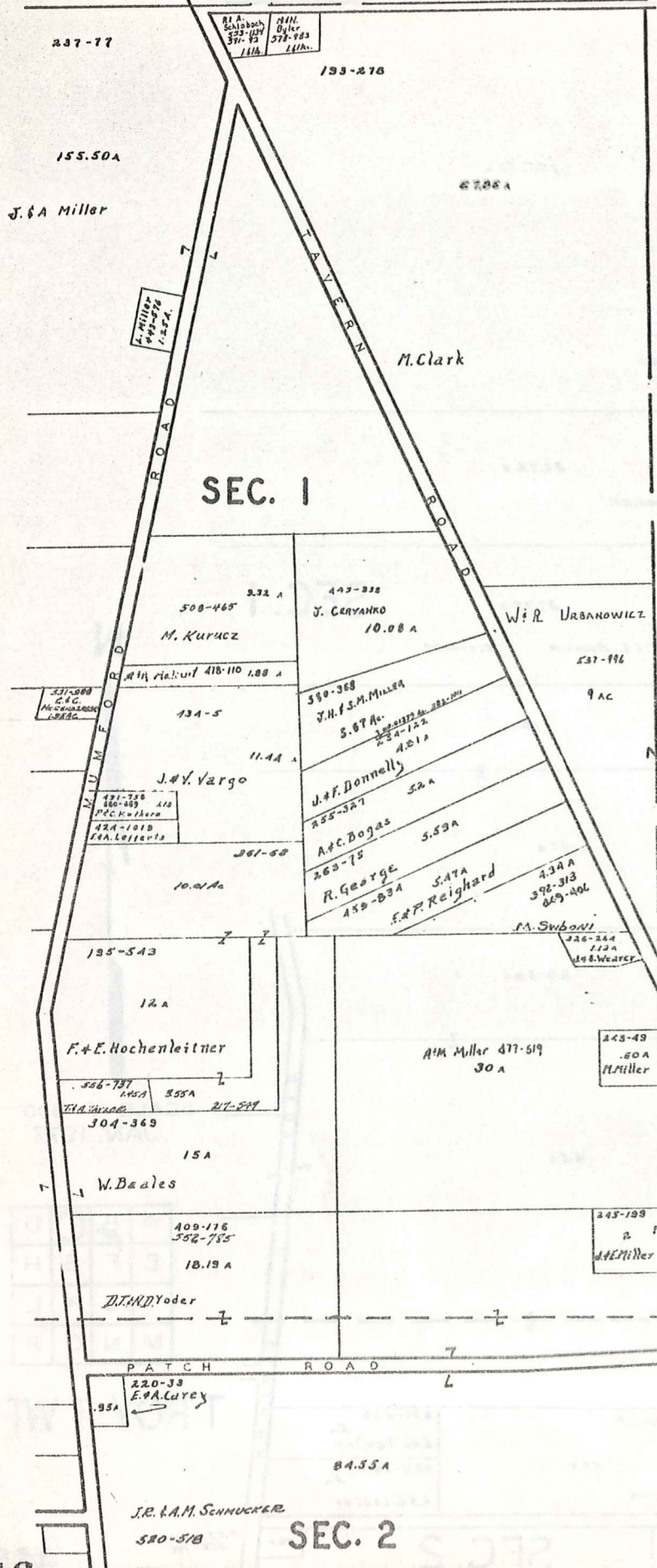
A	B	C	D
E	F	G	H
I	J	K	L
M	N	O	P

A.P. Decker  
550-796

D.R. Yoder  
376-215  
2-4974

70A

BURTON TOWNSHIP



BURTON TOWNSHIP  
P A R K M A N T O W N S H I P

SEC. 1

SEC. 2

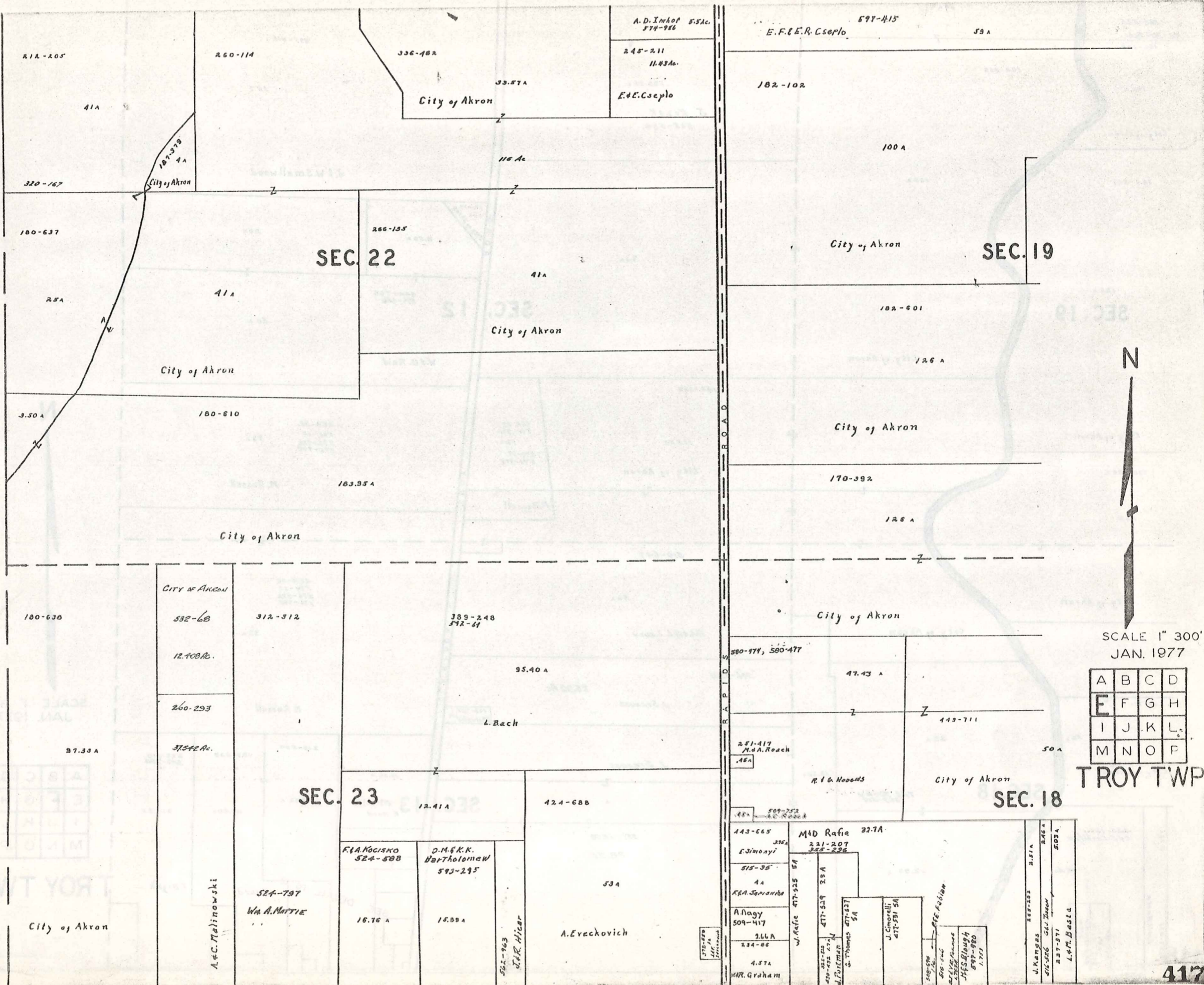


SCALE 1" = 300'  
JAN. 1977

A	B	C	D
E	F	G	H
I	J	K	L
M	N	O	P

TROY TWP

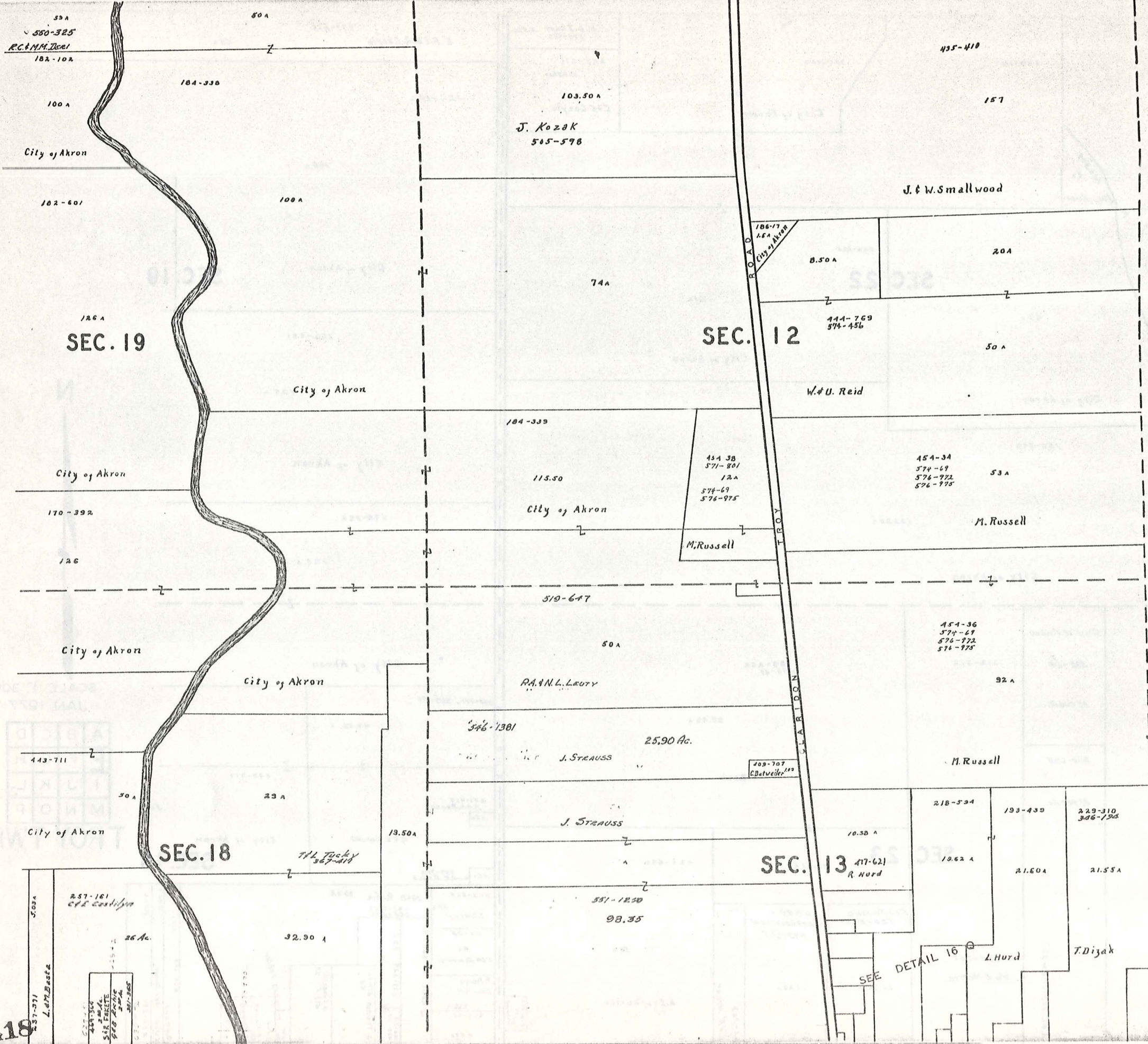
T  
O  
W  
N  
S  
H  
I  
P  
  
A  
U  
B  
U  
R  
N



SCALE 1" 300'  
JAN. 1977

A	B	C	D
E	F	G	H
I	J	K	L
M	N	O	P

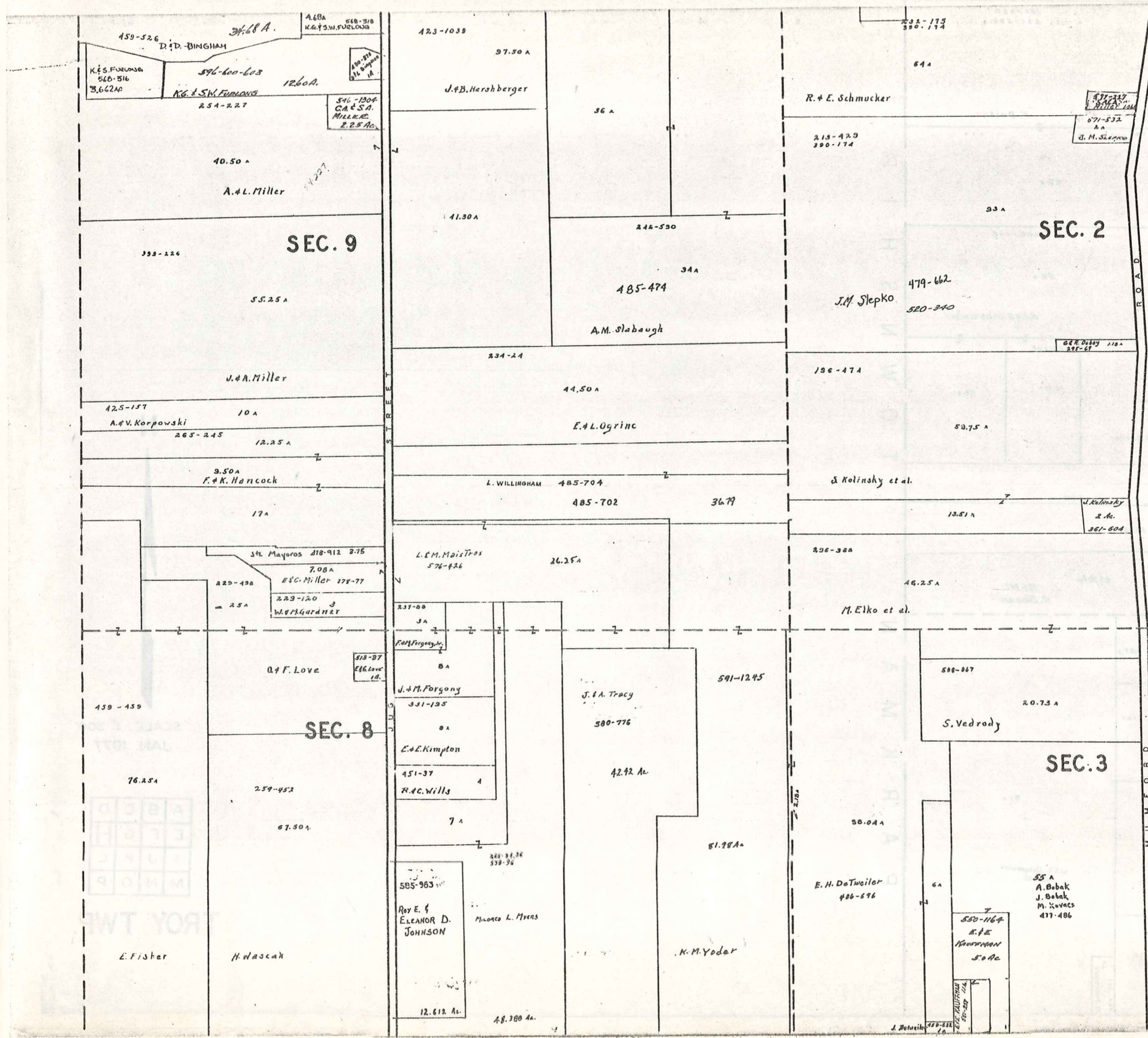
TROY TWP.



SCALE 1" = 300'  
JAN. 1977

A	B	C	D
E	F	G	H
I	J	K	L
M	N	O	P

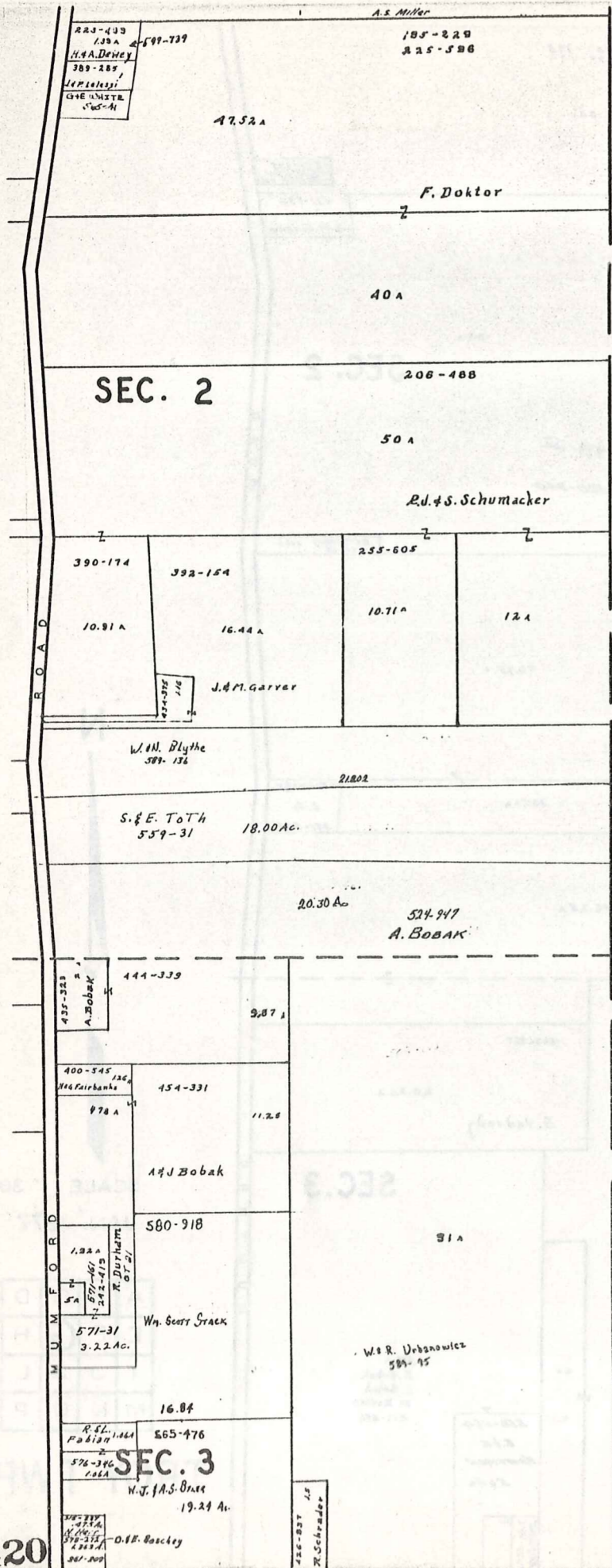
TROY TWP.



SCALE 1" = 300'  
 JAN. 1977

A	B	C	D
E	F	G	H
I	J	K	L
M	N	O	P

TROY TWP.



P  
A  
R  
K  
M  
A  
N  
T  
O  
W  
N  
S  
H  
I  
P



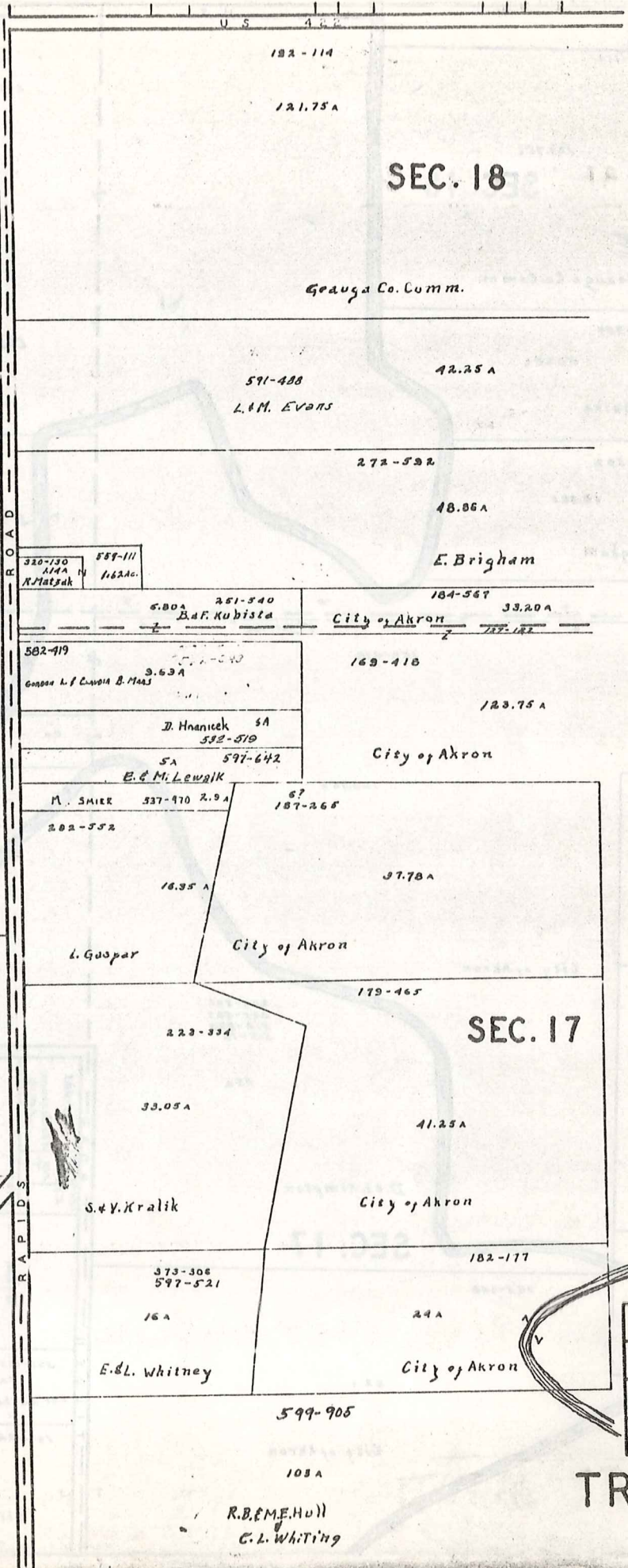
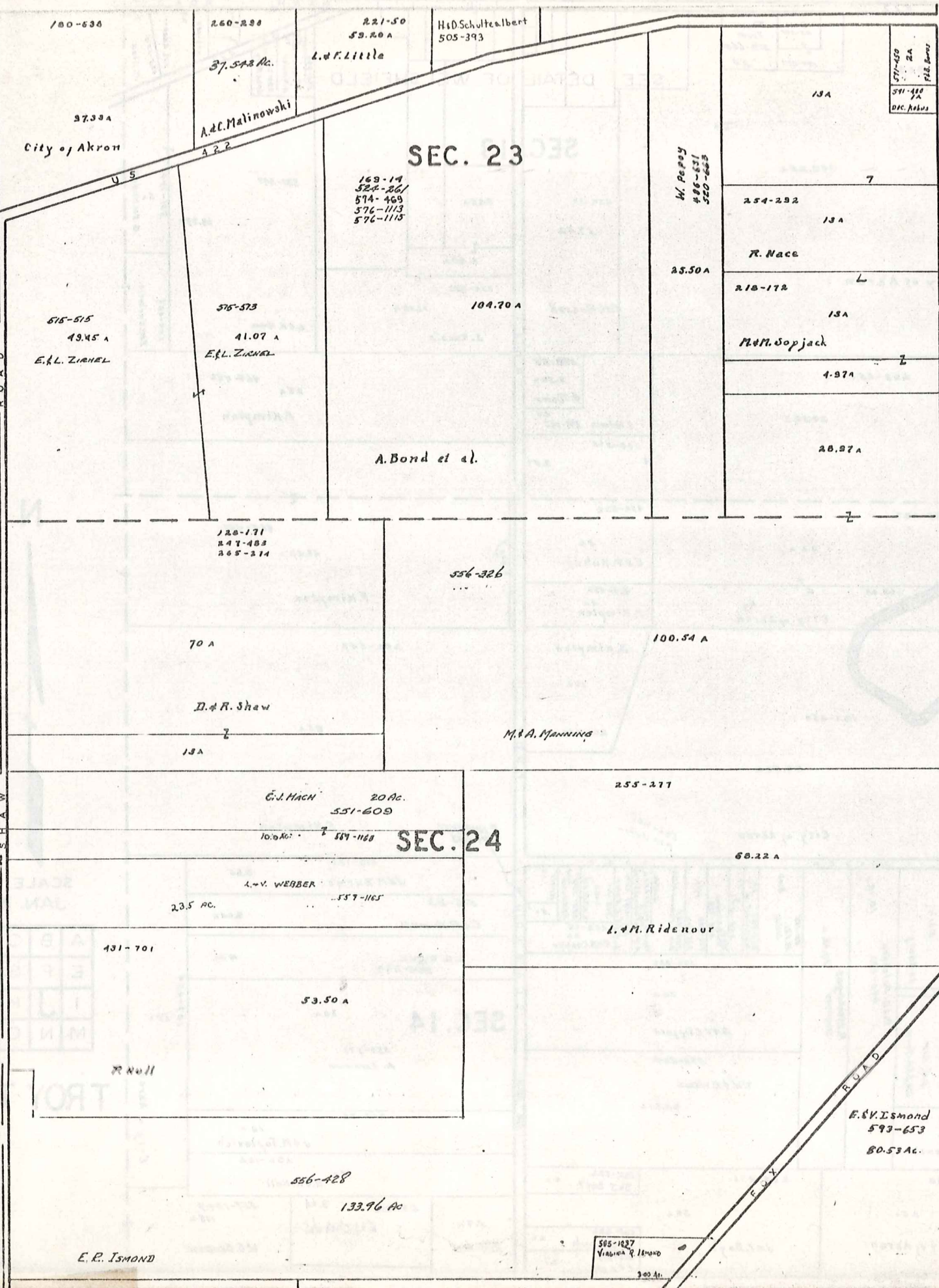
SCALE 1" 300'  
JAN. 1977

A	B	C	D
E	F	G	H
I	J	K	L
M	N	O	P

TROY TWP.

420

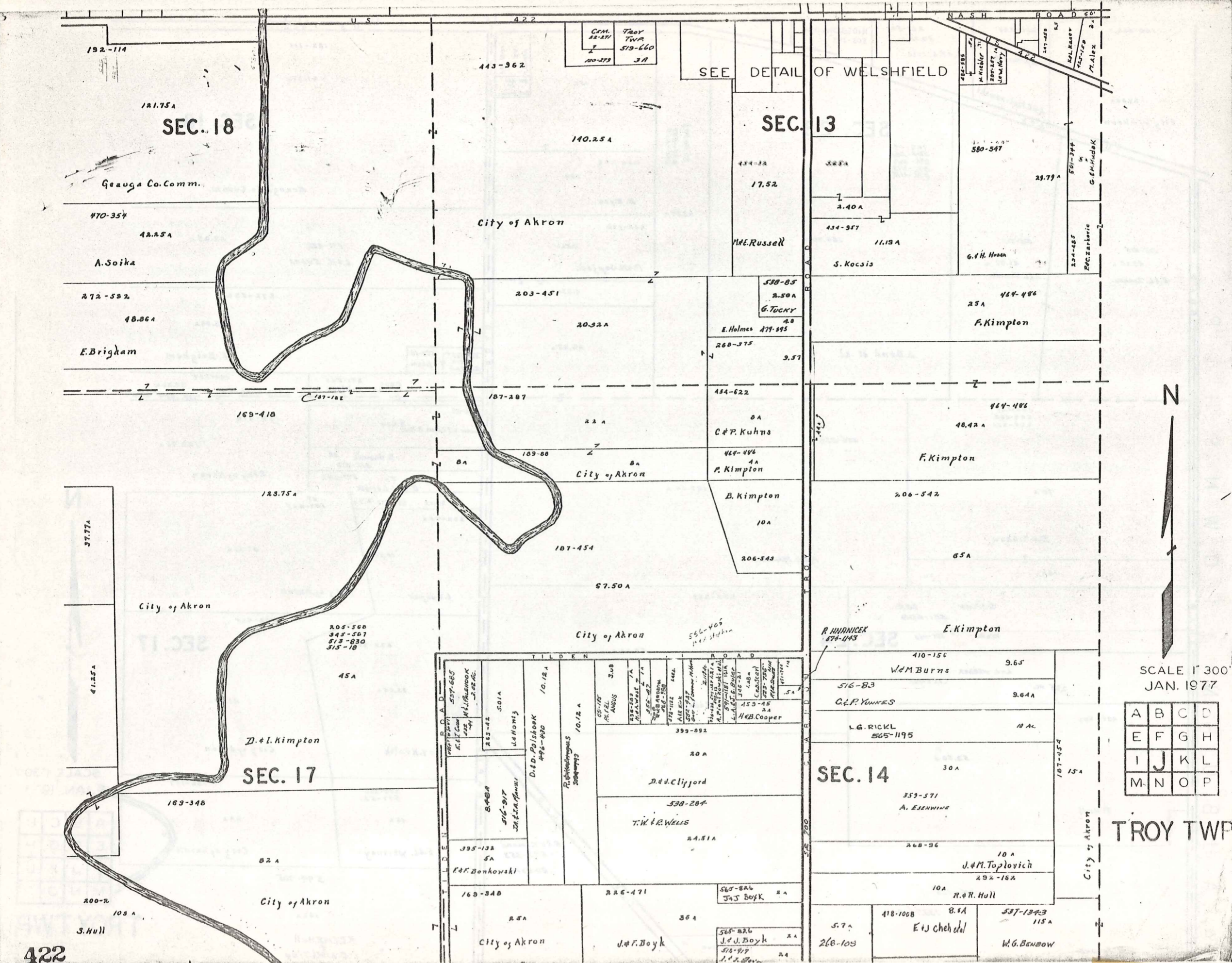
A U B U R N T O W N S H I P



SCALE 1"=300'  
JAN. 1907

A	B	C	D
E	F	G	H
I	J	K	L
M	N	O	P

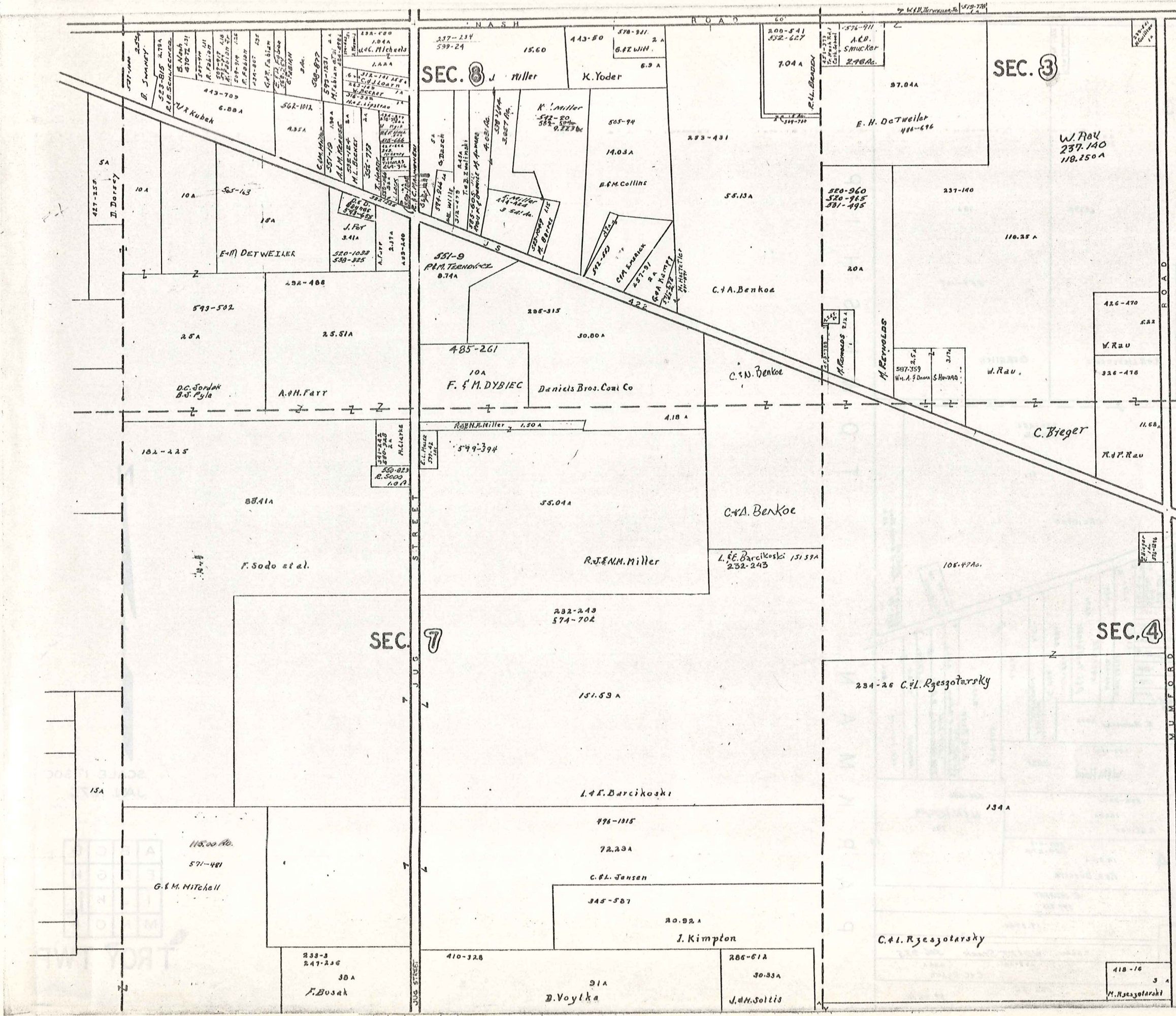
TROY TWP



SCALE 1"=300'  
JAN. 1977

A	B	C	D
E	F	G	H
I	J	K	L
M	N	O	P

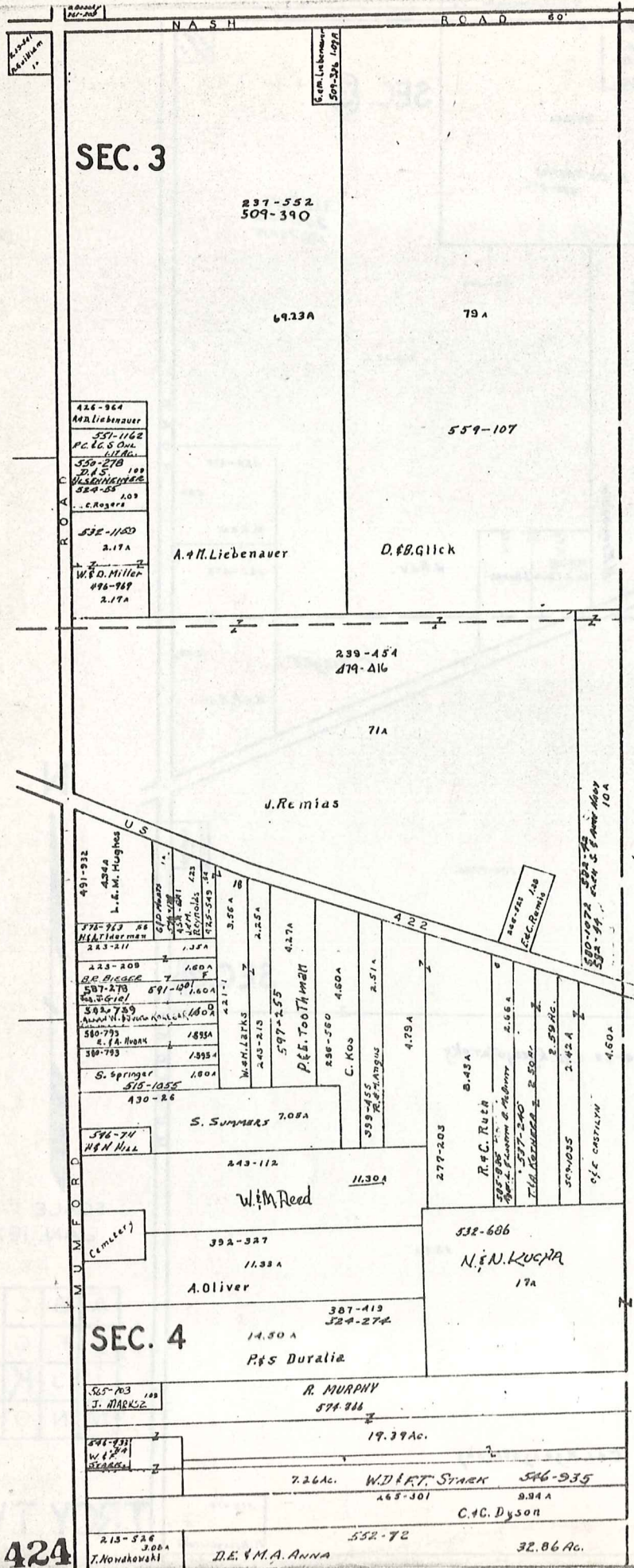
TROY TWP



SCALE 1" = 300'  
JAN. 1977

A	B	C	D
E	F	G	H
I	J	K	L
M	N	O	P

TROY TWP.  
423



P A R K M A N T O W N S H I P



SCALE 1" = 300'  
JAN. 1977

A	B	C	D
E	F	G	H
I	J	K	L
M	N	O	P

TROY TWP.

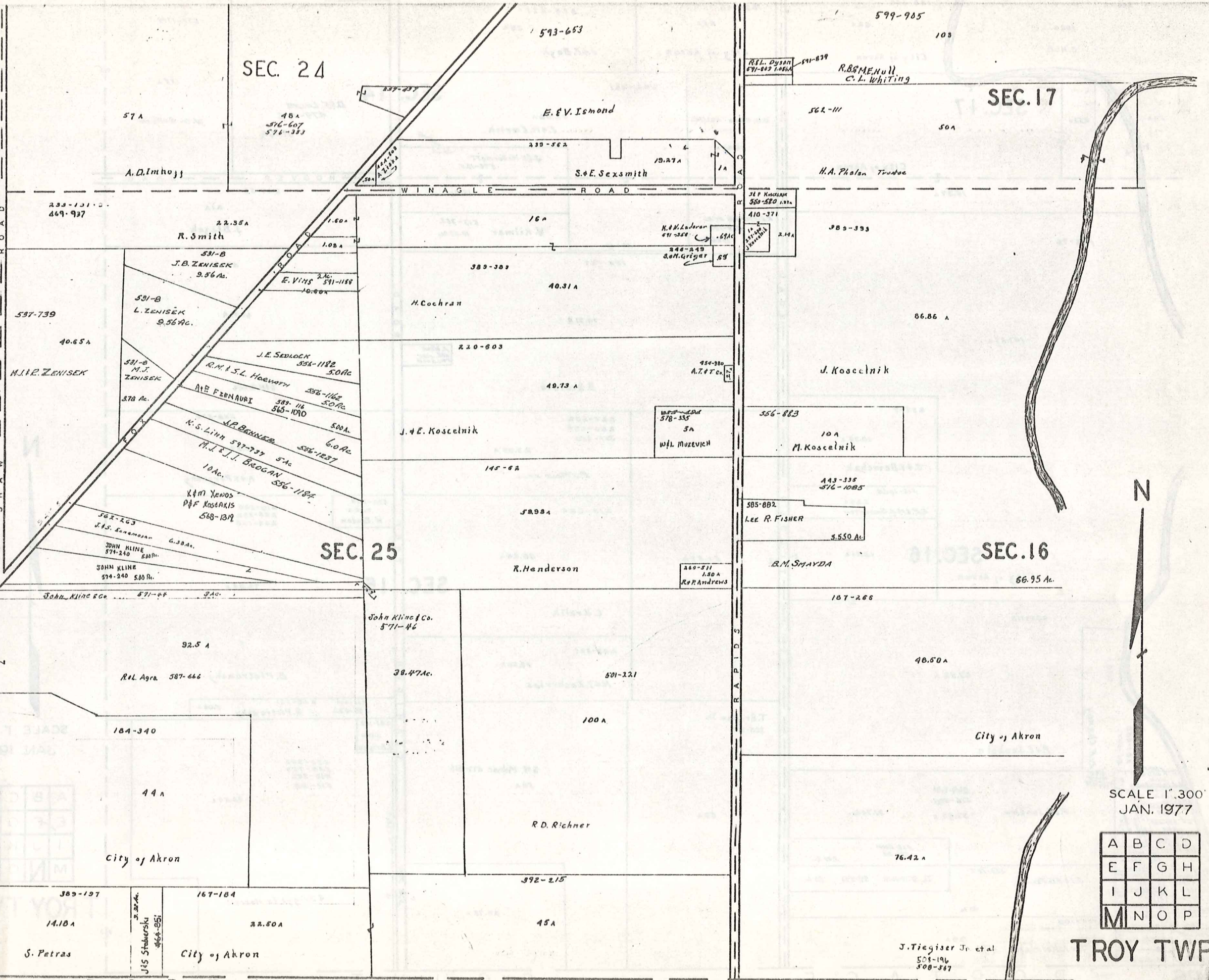
TOWN OF SHAWNEE

SEC. 24

SEC. 17

SEC. 25

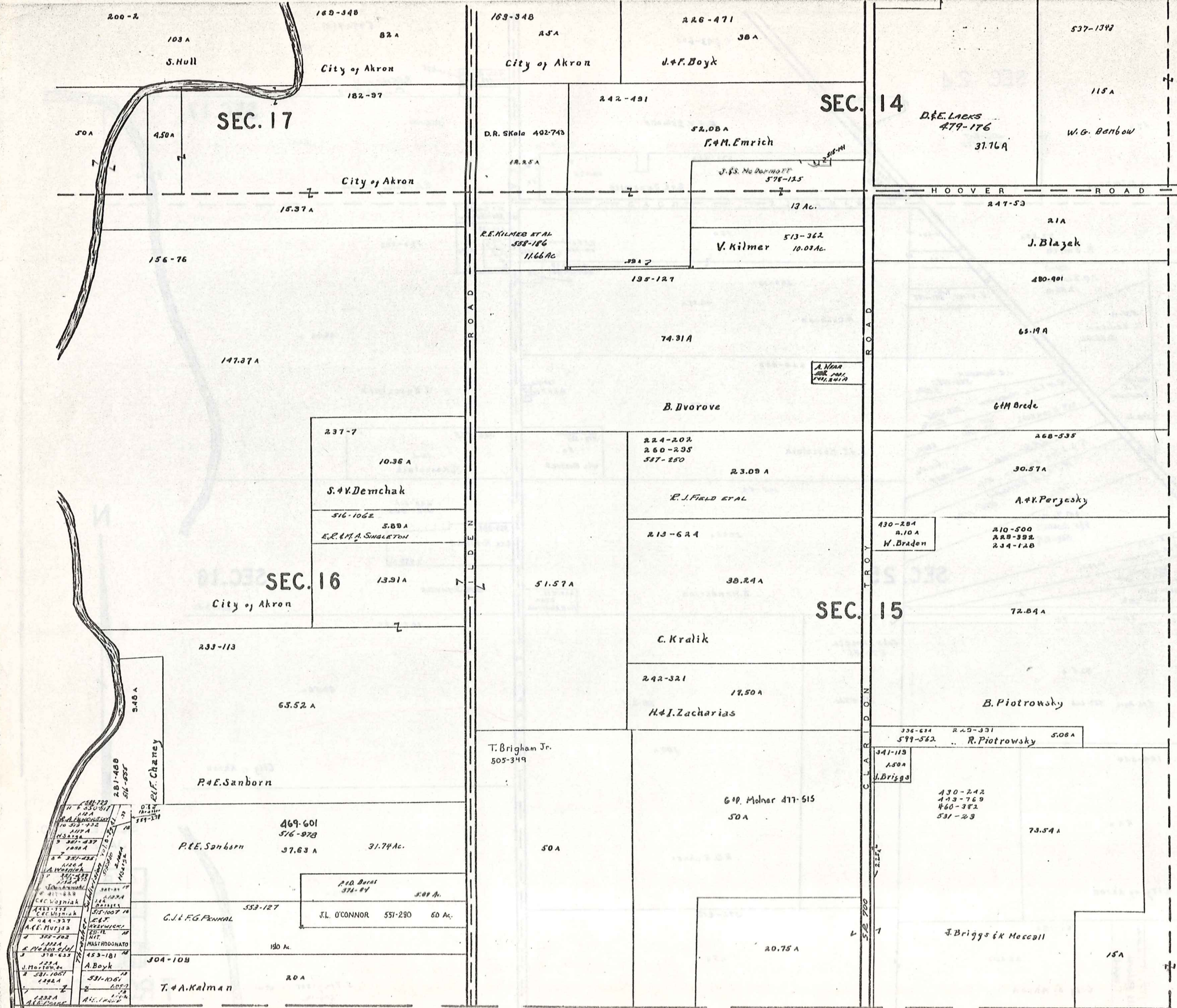
SEC. 16



SCALE 1"=300'  
JAN. 1977

A	B	C	D
E	F	G	H
I	J	K	L
M	N	O	P

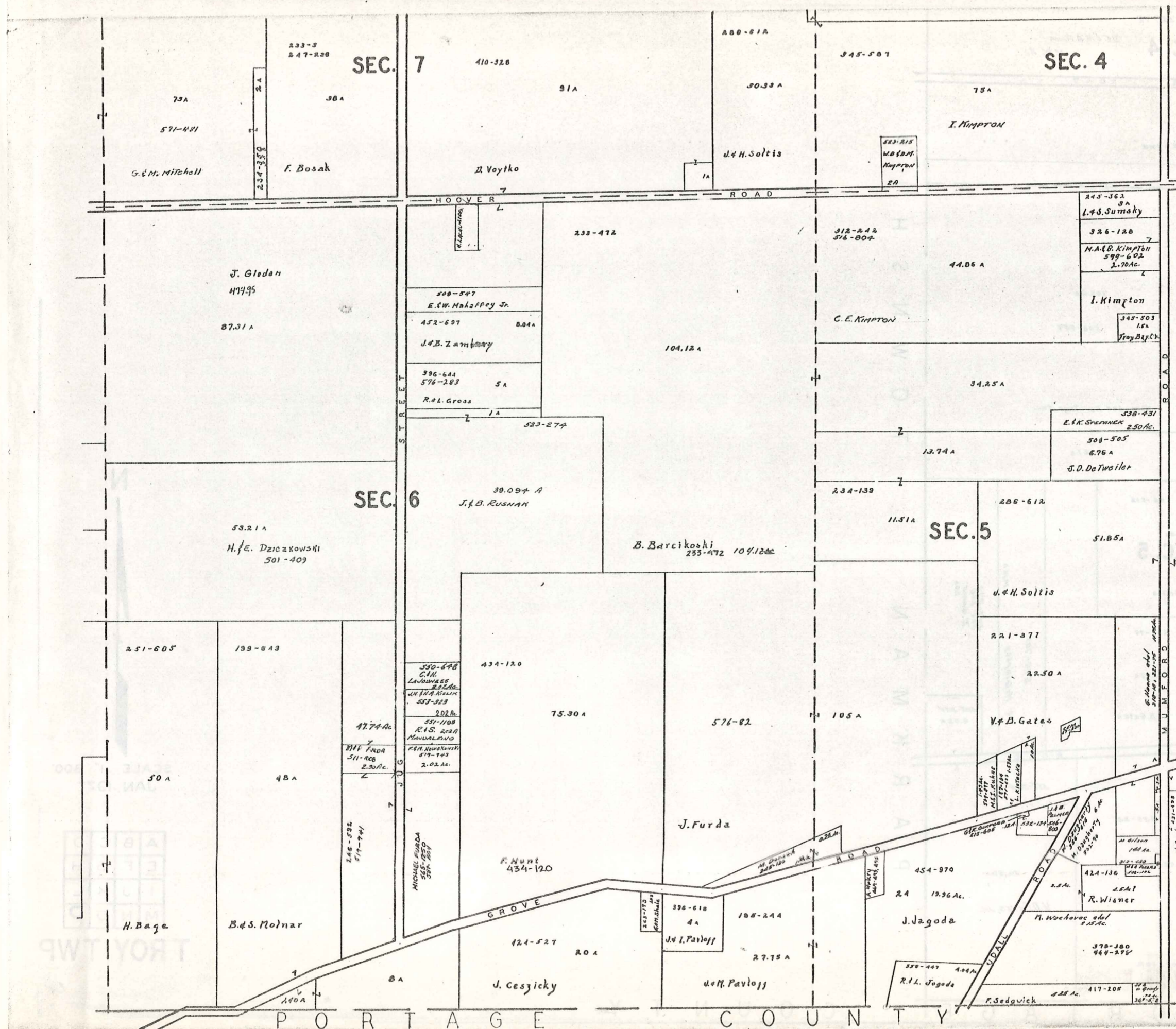
TROY TWP.



SCALE 1" 300'  
JAN. 1977

A	B	C	D
E	F	G	H
I	J	K	L
M	N	O	P

TROY TWP.



SCALE 1" = 300'  
JAN. 1977

A	B	C	D
E	F	G	H
I	J	K	L
M	N	O	P

TROY TWP.

442-451-375  
Nowakowski  
320-225  
K.I.D. CLOAK  
553-1132  
F.V. GZACK  
2.78 Ac.

552-72  
D.E. & M.A. ANNA  
32.86 Ac.

SEC. 4

ALGER ROAD

451-13

D.H. ANNA

570-542  
108 A  
D. BOYING

100.6A

508-459

332-230  
1.2 A  
J. PATTERSON

Tom-Lee Heritage Inc.

304-245  
1.78 A  
E.M. ROYER

21A

206-612

SEC. 5

J.H. Soltis

237-76

31.77A

B. GATES

578-705  
S. McIMPSEY

528-271  
528-320  
D. GANES  
2.0A

558-324  
4.92A

411-240  
411-241  
411-242  
411-243  
411-244  
411-245  
411-246  
411-247  
411-248  
411-249  
411-250  
411-251  
411-252  
411-253  
411-254  
411-255  
411-256  
411-257  
411-258  
411-259  
411-260  
411-261  
411-262  
411-263  
411-264  
411-265  
411-266  
411-267  
411-268  
411-269  
411-270  
411-271  
411-272  
411-273  
411-274  
411-275  
411-276  
411-277  
411-278  
411-279  
411-280  
411-281  
411-282  
411-283  
411-284  
411-285  
411-286  
411-287  
411-288  
411-289  
411-290  
411-291  
411-292  
411-293  
411-294  
411-295  
411-296  
411-297  
411-298  
411-299  
411-300

307-281  
W. H. GARDNER

055-745  
R. BOYING

411-240  
411-241  
411-242  
411-243  
411-244  
411-245  
411-246  
411-247  
411-248  
411-249  
411-250  
411-251  
411-252  
411-253  
411-254  
411-255  
411-256  
411-257  
411-258  
411-259  
411-260  
411-261  
411-262  
411-263  
411-264  
411-265  
411-266  
411-267  
411-268  
411-269  
411-270  
411-271  
411-272  
411-273  
411-274  
411-275  
411-276  
411-277  
411-278  
411-279  
411-280  
411-281  
411-282  
411-283  
411-284  
411-285  
411-286  
411-287  
411-288  
411-289  
411-290  
411-291  
411-292  
411-293  
411-294  
411-295  
411-296  
411-297  
411-298  
411-299  
411-300

411-240  
411-241  
411-242  
411-243  
411-244  
411-245  
411-246  
411-247  
411-248  
411-249  
411-250  
411-251  
411-252  
411-253  
411-254  
411-255  
411-256  
411-257  
411-258  
411-259  
411-260  
411-261  
411-262  
411-263  
411-264  
411-265  
411-266  
411-267  
411-268  
411-269  
411-270  
411-271  
411-272  
411-273  
411-274  
411-275  
411-276  
411-277  
411-278  
411-279  
411-280  
411-281  
411-282  
411-283  
411-284  
411-285  
411-286  
411-287  
411-288  
411-289  
411-290  
411-291  
411-292  
411-293  
411-294  
411-295  
411-296  
411-297  
411-298  
411-299  
411-300

411-240  
411-241  
411-242  
411-243  
411-244  
411-245  
411-246  
411-247  
411-248  
411-249  
411-250  
411-251  
411-252  
411-253  
411-254  
411-255  
411-256  
411-257  
411-258  
411-259  
411-260  
411-261  
411-262  
411-263  
411-264  
411-265  
411-266  
411-267  
411-268  
411-269  
411-270  
411-271  
411-272  
411-273  
411-274  
411-275  
411-276  
411-277  
411-278  
411-279  
411-280  
411-281  
411-282  
411-283  
411-284  
411-285  
411-286  
411-287  
411-288  
411-289  
411-290  
411-291  
411-292  
411-293  
411-294  
411-295  
411-296  
411-297  
411-298  
411-299  
411-300

411-240  
411-241  
411-242  
411-243  
411-244  
411-245  
411-246  
411-247  
411-248  
411-249  
411-250  
411-251  
411-252  
411-253  
411-254  
411-255  
411-256  
411-257  
411-258  
411-259  
411-260  
411-261  
411-262  
411-263  
411-264  
411-265  
411-266  
411-267  
411-268  
411-269  
411-270  
411-271  
411-272  
411-273  
411-274  
411-275  
411-276  
411-277  
411-278  
411-279  
411-280  
411-281  
411-282  
411-283  
411-284  
411-285  
411-286  
411-287  
411-288  
411-289  
411-290  
411-291  
411-292  
411-293  
411-294  
411-295  
411-296  
411-297  
411-298  
411-299  
411-300

411-240  
411-241  
411-242  
411-243  
411-244  
411-245  
411-246  
411-247  
411-248  
411-249  
411-250  
411-251  
411-252  
411-253  
411-254  
411-255  
411-256  
411-257  
411-258  
411-259  
411-260  
411-261  
411-262  
411-263  
411-264  
411-265  
411-266  
411-267  
411-268  
411-269  
411-270  
411-271  
411-272  
411-273  
411-274  
411-275  
411-276  
411-277  
411-278  
411-279  
411-280  
411-281  
411-282  
411-283  
411-284  
411-285  
411-286  
411-287  
411-288  
411-289  
411-290  
411-291  
411-292  
411-293  
411-294  
411-295  
411-296  
411-297  
411-298  
411-299  
411-300

411-240  
411-241  
411-242  
411-243  
411-244  
411-245  
411-246  
411-247  
411-248  
411-249  
411-250  
411-251  
411-252  
411-253  
411-254  
411-255  
411-256  
411-257  
411-258  
411-259  
411-260  
411-261  
411-262  
411-263  
411-264  
411-265  
411-266  
411-267  
411-268  
411-269  
411-270  
411-271  
411-272  
411-273  
411-274  
411-275  
411-276  
411-277  
411-278  
411-279  
411-280  
411-281  
411-282  
411-283  
411-284  
411-285  
411-286  
411-287  
411-288  
411-289  
411-290  
411-291  
411-292  
411-293  
411-294  
411-295  
411-296  
411-297  
411-298  
411-299  
411-300

428

P O R T A G E

C O U N T Y

P  
A  
R  
K  
M  
A  
N  
T  
O  
W  
N  
S  
H  
I  
P



SCALE 1" 300'  
JAN. 1977

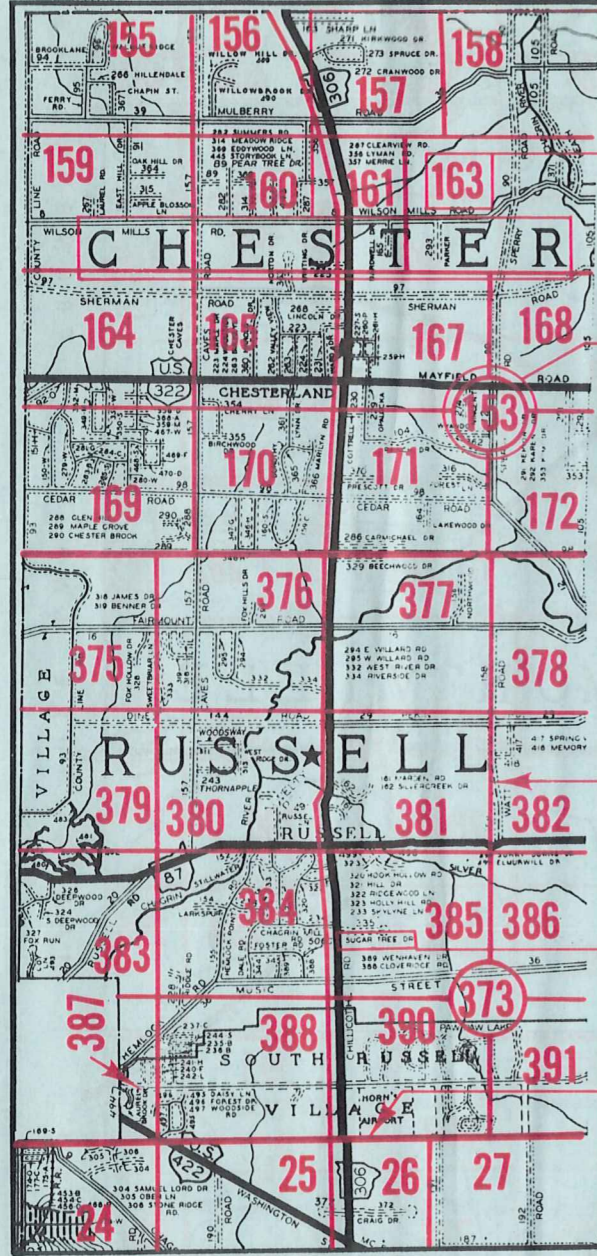
A	B	C	D
E	F	G	H
I	J	K	L
M	N	O	P

TROY TWP



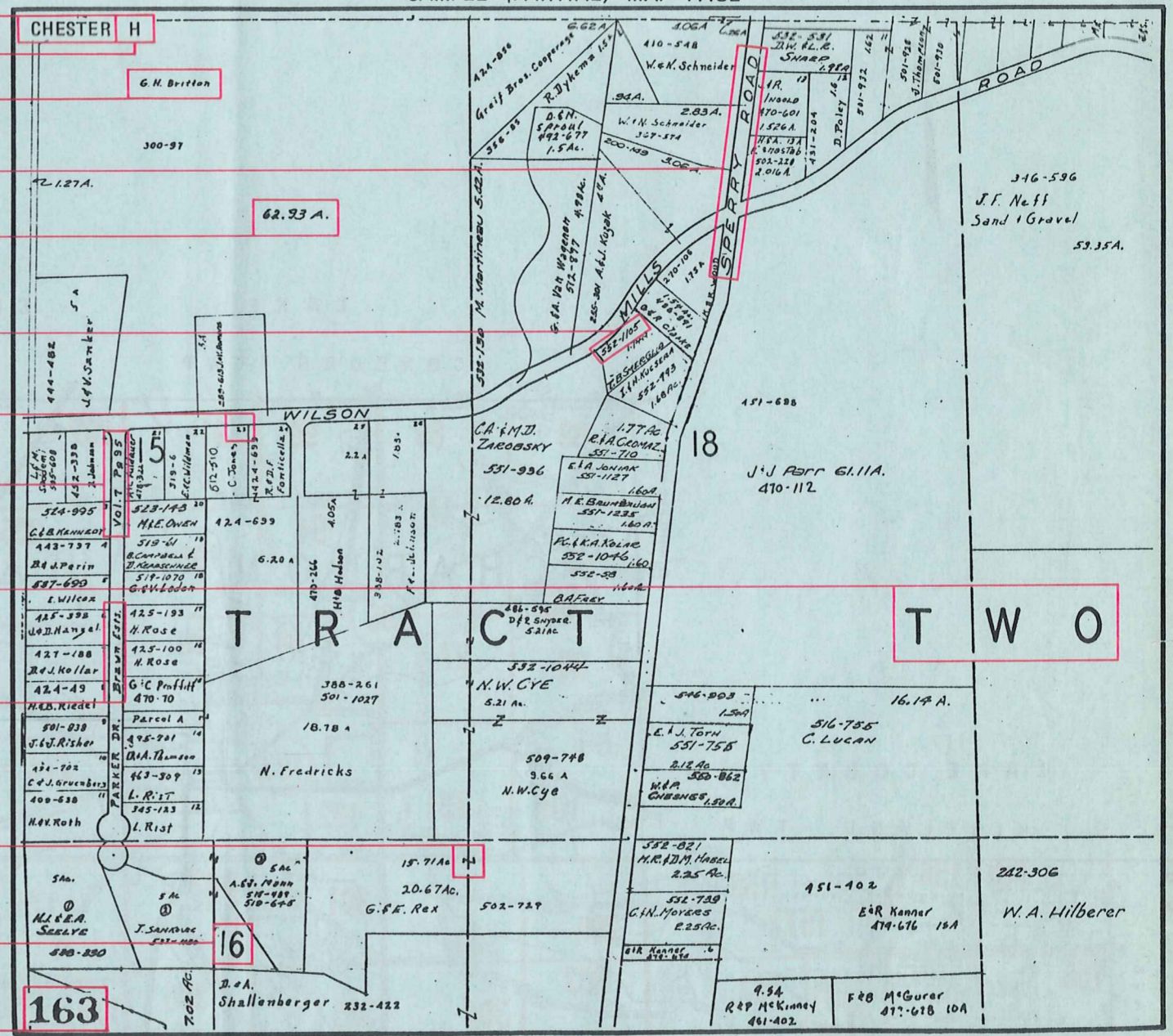
# Explanation and Use Sheet for Geauga County, Ohio

SAMPLE (PARTIAL) COUNTY INDEX MAP



- Township Name
- Map Page Number (Or Letter)
- Owners Name
- Street Name
- Acreage
- Municipality Index Beginning Atlas Page Number
- Deed Book & Page
- Subdivision Lot Number
- Plat Book & Page
- Tract Number
- Atlas Page Boundary
- Subdivision Name
- Street Name
- Denotes Continuous Ownership
- Municipality Index Atlas Page Boundary
- Tract Lot Number
- Atlas Page Number

SAMPLE (PARTIAL) MAP PAGE



## USE OF THE MAP VOLUME

1. LOCATE THE GENERAL AREA OF INTEREST ON THE COUNTY INDEX MAP, ATLAS PAGE 'B'.
2. A. IF PROPERTY IS IN A TOWNSHIP, NOTE THE ATLAS PAGE NUMBER. TURN TO THE PAGE INDICATED AND LOCATE SPECIFIC PARCEL OF INTEREST.  
NOTE: ON SOME MAPS YOU MAY BE REFERRED TO A DETAIL SHEET SHOWING AN ENLARGEMENT OF THE AREA. THESE MAPS ARE FOUND AT THE END OF THE REGULAR MAP PAGES IN EACH TOWNSHIP EITHER IN ALPHABETICAL OR NUMERICAL SEQUENCE.
- B. IF PROPERTY IS IN A MUNICIPALITY, REFER TO THE TABLE OF CONTENTS, ATLAS PAGE 'C', AND NOTE THE BEGINNING ATLAS PAGE NUMBER FOR THE MUNICIPALITY OF INTEREST.
  - (1) TURN TO THE PAGE INDICATED. ON THIS PAGE WILL APPEAR AN INDEX MAP FOR THAT MUNICIPALITY.
  - (2) LOCATE SPECIFIC AREA OF INTEREST AND NOTE THE MAP PAGE NUMBER.  
NOTE: DO NOT CONFUSE THE MAP PAGE NUMBER WITH THE ATLAS PAGE NUMBER IN THESE MUNICIPALITIES.
  - (3) FOLLOW EITHER ALPHABETICAL OR NUMERICAL SEQUENCE TO THE MAP PAGE INDICATED AND LOCATE SPECIFIC PARCEL OF INTEREST.